



189
250
Ride on the Bird Masumi Ogura

Bird Prints
by Female
Japanese
Artists

Introduction

In Japan, professional artists have traditionally been men rather than women. All printed art featuring birds was made by men until the 1950s when it became acceptable for women to also be professional artists. Since then about ninety female Japanese artists have made one or more bird prints. These prints are stylistically diverse because modern artists, both women and men, are expected to express their individuality in their work. Some artists have chosen to draw birds accurately while most others have intentionally drawn birds only semi-accurately or inaccurately. More women than men have chosen the latter option, as shown in the table below.

Accuracy of bird shape and color	Female Artists	Male Artists
Accurate	9%	15%
Semi-accurate	38%	45%
Inaccurate	53%	40%

The stylistic diversity of modern bird prints is also due in part to the variety of printing methods now used by both female and male artists, as shown in the table below. Woodblock printing was the only method used before the 1950s.

Printing method	Female Artists	Male Artists
Woodblock	34%	44%
Intaglio	34%	19%
Screenprint	16%	15%
Lithograph	11%	20%
Digital	5%	2%

This virtual exhibition illustrates the stylistic diversity of bird prints made by fifty female Japanese artists who are represented in the Reader Collection of Japanese Art. For each of the fifty prints the following information is provided: names of the artist and the bird drawn (if known), accuracy, printing method, title (if any) and print size. Prints are arranged in descending order of accuracy.

1 **Etsuko Ishikawa** – hazel grouse (*Bonasa bonasia*), accurate, intaglio, entitled walking, 215 x 190 mm



3/20

散步

Etsuko Ishikawa '89

2 **Mihoko Kasamatsu** – oriental greenfinch (*Carduelis sinica*), accurate, woodblock, entitled early spring, 320 x 240 mm



1/62

早春

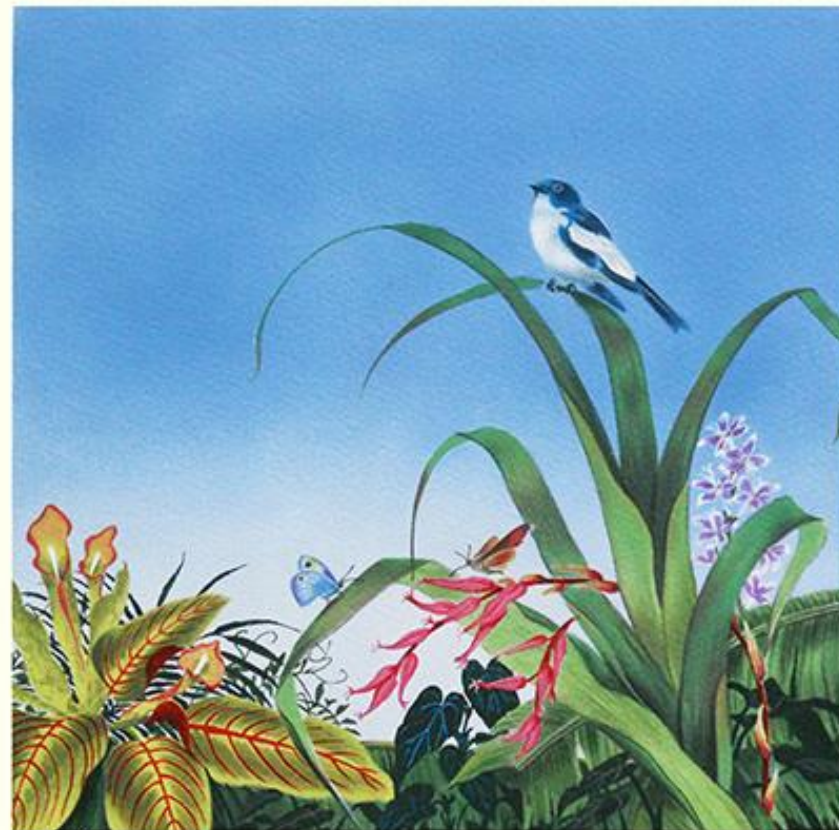
Mihoko Kasamatsu

3 **Hiroko Ogihara** – albino Java sparrow (*Padda oryzivora*), semi-accurate, lithograph, entitled spring white, 350 x 455 mm



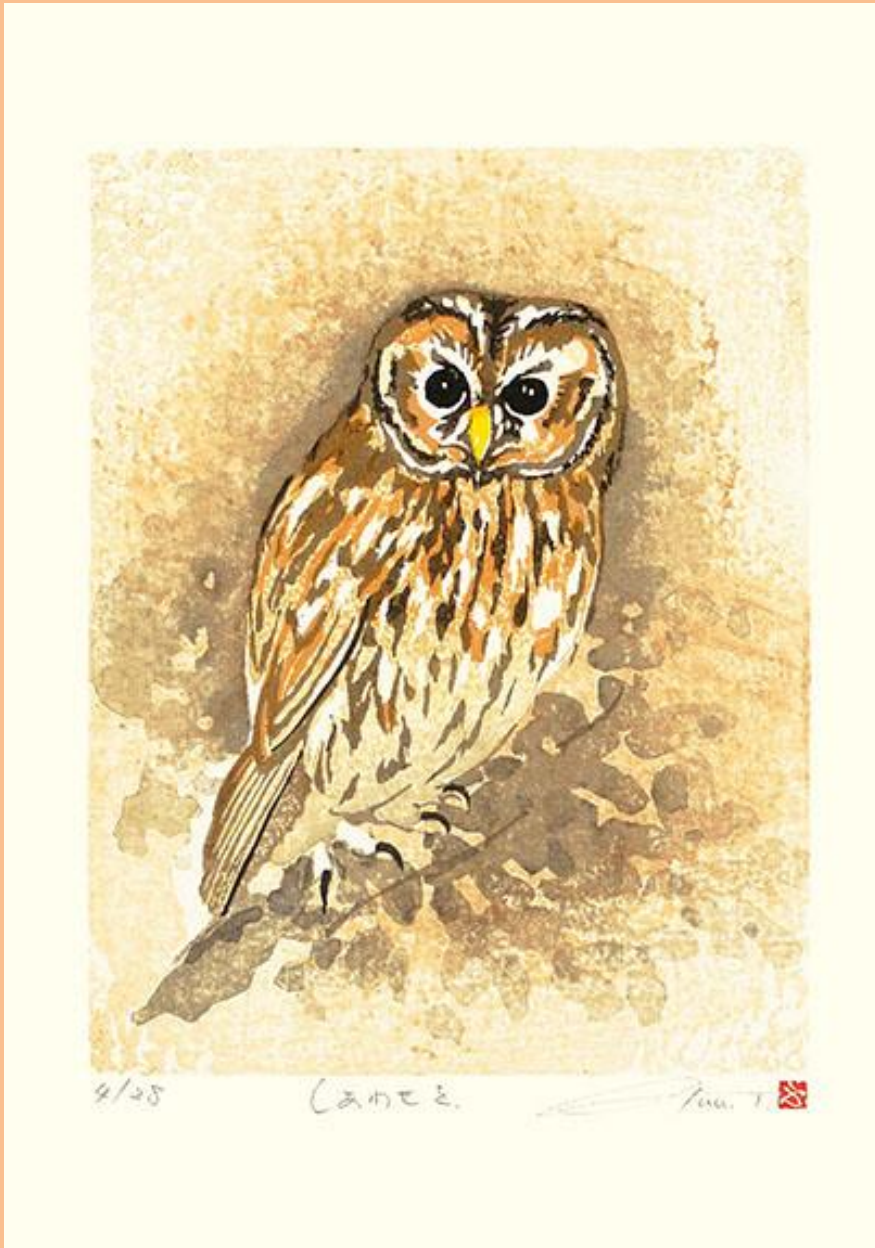
4/100

4 **Kumiko Kita** – oriental magpie robin (*Copsychus saularis*), semi-accurate, lithograph, 235 x 235 mm



297/500

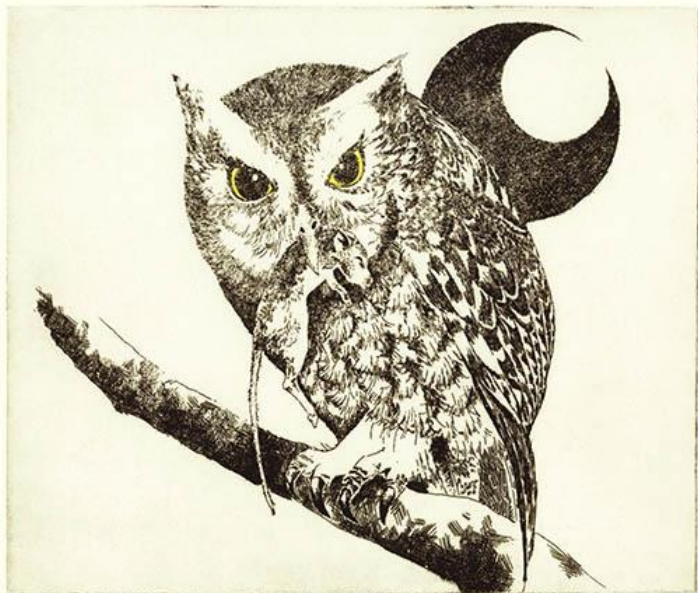
5 **Fū Takenaka** - Ural owl (*Strix uralensis*), semi-accurate, woodblock, entitled happiness, 230 x 320 mm



6 **Natsuo Ikegami** – Daurian redstart (*Phoenicurus auroreus*), semi-accurate, woodblock, 110 x 110 mm



7 **Hiroko Yamada** – scops owl (*Otus* sp.), semi-accurate, intaglio, entitled hunting, 300 x 240 mm



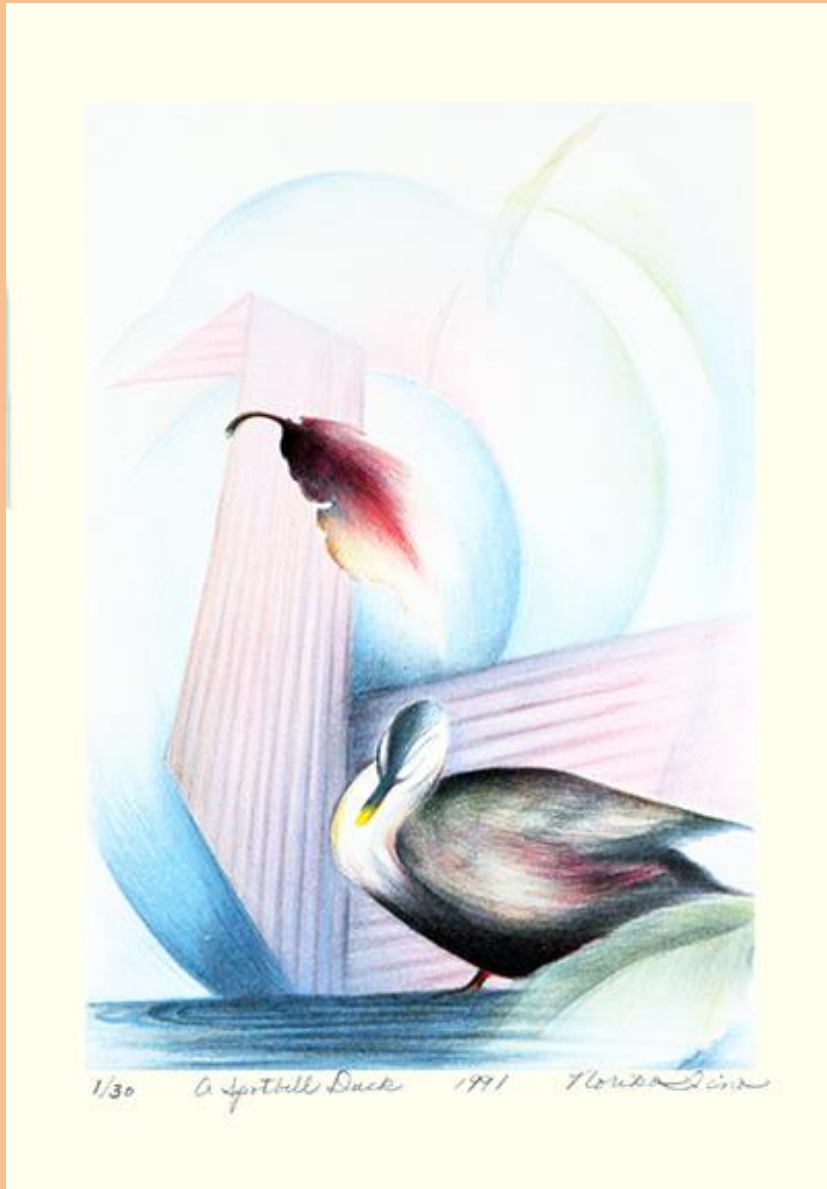
1/60 1995 #7/1 Hiroko Y

8 **Hideko Nagahama** – oriental turtle-dove (*Streptopelia orientalis*), semi-accurate, intaglio, entitled with all my heart, 200 x 250 mm

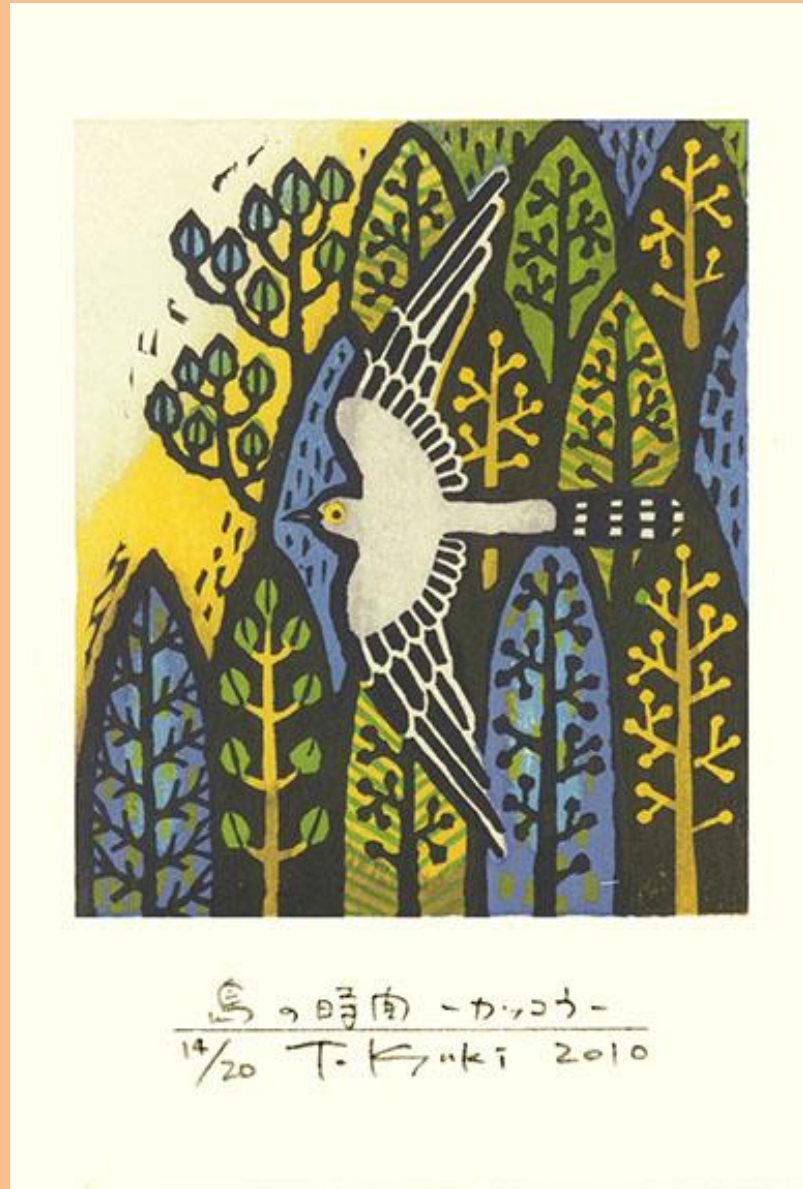


1/60 with all my heart Hideko N

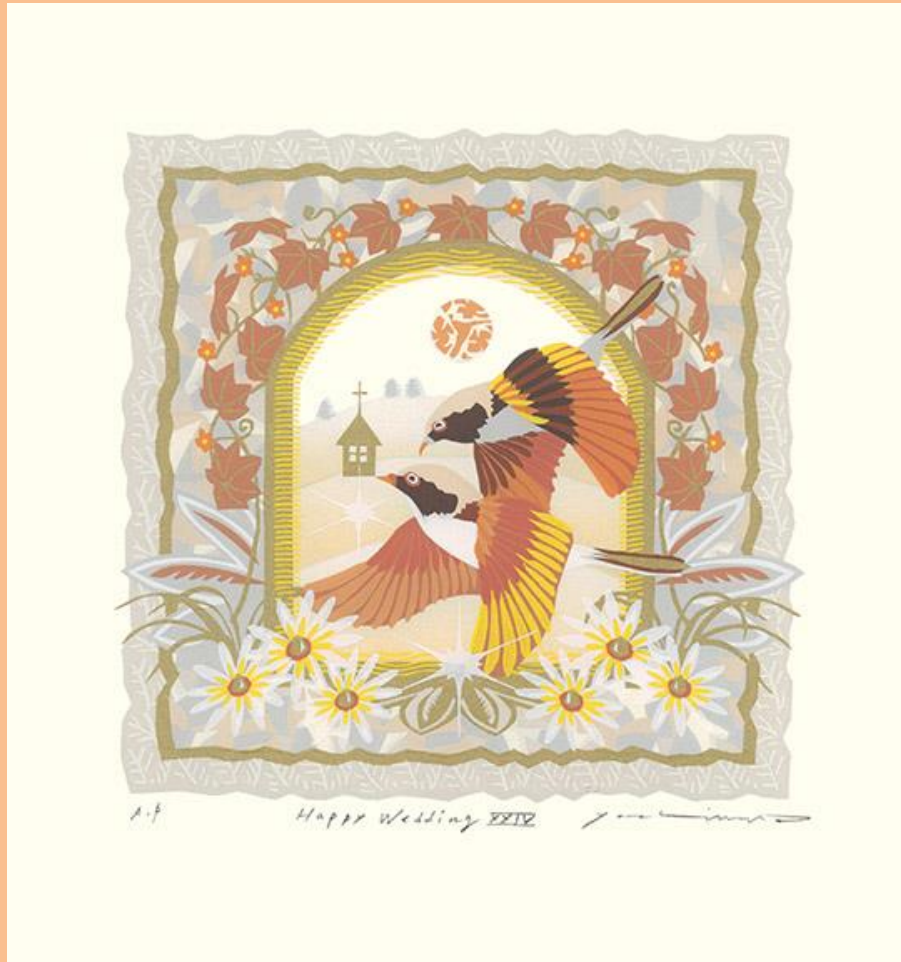
9 **Noriko Iino** – spot-billed duck (*Anas poecilorhyncha*), semi-accurate, lithograph, entitled a spotbill duck, 345 x 480 mm



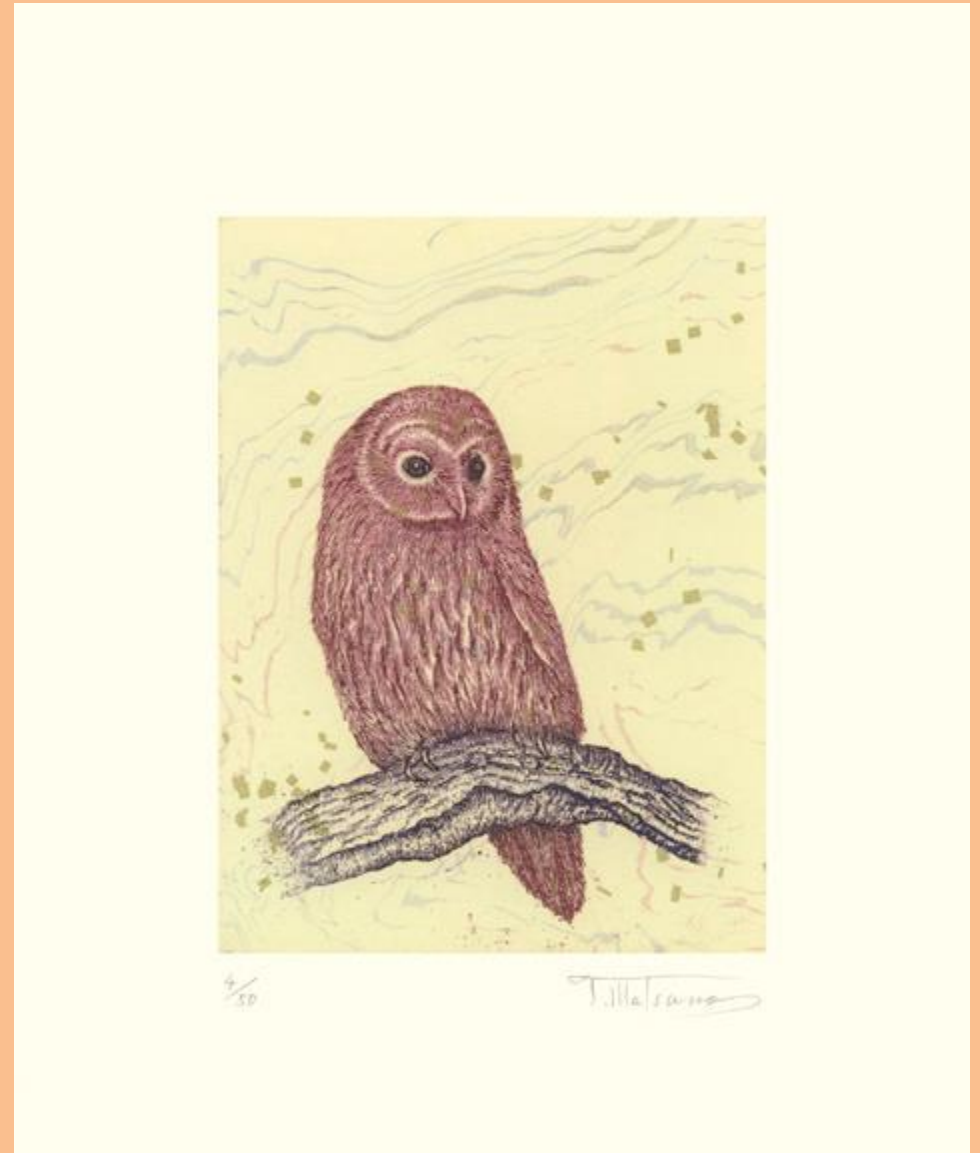
10 **Tomoko Kyūki** - common cuckoo (*Cuculus canorus*), semi-accurate, woodblock, entitled bird's time – cuckoo, 100 x 150 mm



11 **Akiko Yoshimura** – Daurian redstart (*Phoenicurus auroreus*), semi-accurate, screenprint, entitled happy wedding XXIV, 215 x 225 mm



12 **Tomiko Matsuno** – Ural owl (*Strix uralensis*), semi-accurate, intaglio, 210 x 250 mm



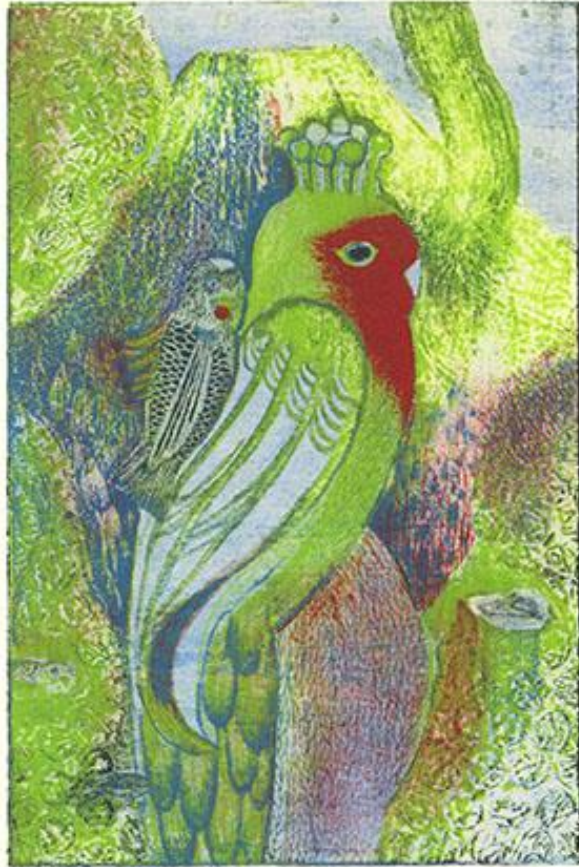
13 **Fumiko Hori** – swan (*Cygnus* sp.) and unknown birds, semi-accurate, screenprint, entitled rose lake from the Nutcracker, 645 x 375 mm



14 **Naomi Hashimoto** – dove (*Columba* sp.), semi-accurate, lithograph, entitled uccello, 200 x 200 mm



15 **Motomi Tsunoda** – Indian peafowl (*Pavo cristatus*), semi-accurate, lithograph, entitled Fuji birds – parenting, 210 x 295 mm



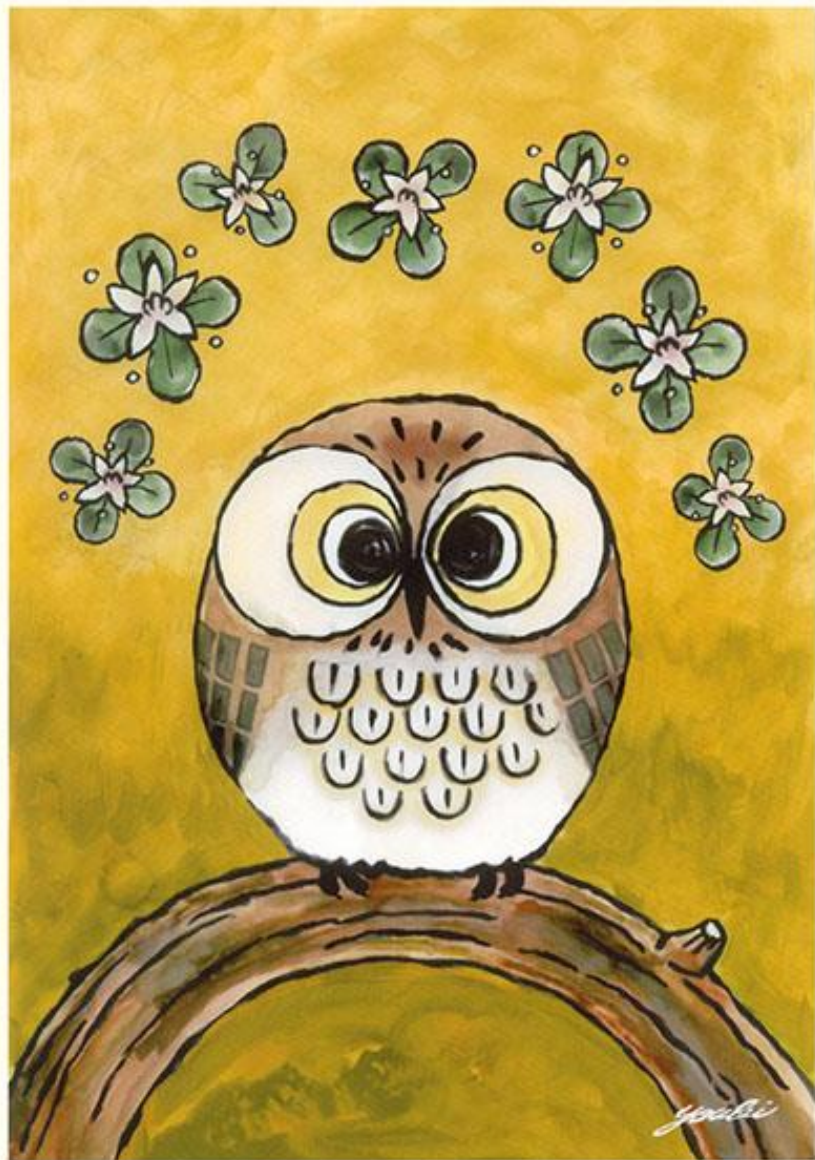
1/50 富士鳥 - 子育て Motomi T.

16 **Kiyomi Moji** – scops owl (*Otus scops*) and pygmy woodpecker (*Dendrocopos kizuki*), semi-accurate, woodblock, entitled home in the forest, 215 x 240 mm



4/50 - 森の家 - (kiyomi moji)

17 **Ayaka Sen** – Ural owl (*Strix uralensis*), semi-accurate, screenprint, entitled Midas touch, 200 x 275 mm



18 **Hiroko Ikezumi** – large-billed crow (*Corvus macrorhynchos*), semi-accurate, woodblock, entitled early afternoon, 240 x 320 mm



19 **Masumi Ozawa** – Daurian redstart (*Phoenicurus auroreus*), semi-accurate, screenprint, entitled ride on the bird, 135 x 165 mm



$\frac{149}{250}$ Ride on the Bird Masumi Ozawa

20 **Makiko Hattori** – scops owl (*Otus* sp.), semi-accurate, intaglio, entitled moonlight, 95 x 130 mm



35/80 Makiko Hattori

21 **Michi Fukui** – canary (*Serinus canaria*), semi-accurate, woodblock, entitled east wind, 260 x 210 mm



1976

東風

福井三知

11/00

22 **Yukie Matsui** – Ural owl (*Strix uralensis*), semi-accurate, intaglio, entitled always together, 240 x 170 mm

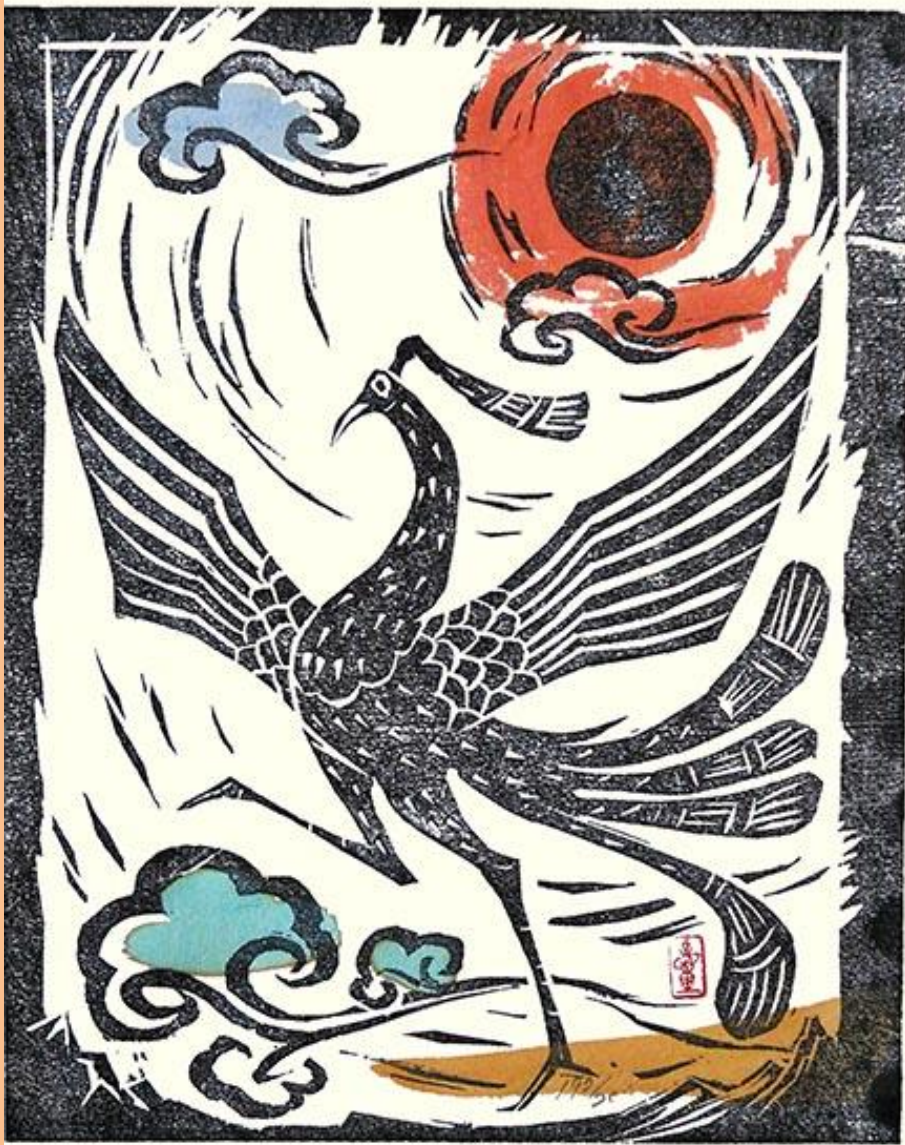


12 / 50

いつもいっしょ

Yukie Matsui

23 **Hitomi Ogawa** – mythical hō-ō bird, semi-accurate, woodblock, entitled lucky bird, 225 x 290 mm



24 **Taeko Takabe** – domestic fowl (*Gallus gallus*), semi-accurate, screenprint, 270 x 265 mm



25 **Mirei Kodama** – red-crowned crane (*Grus japonensis*), semi-accurate, lithograph, entitled crane month, 660 x 500 mm



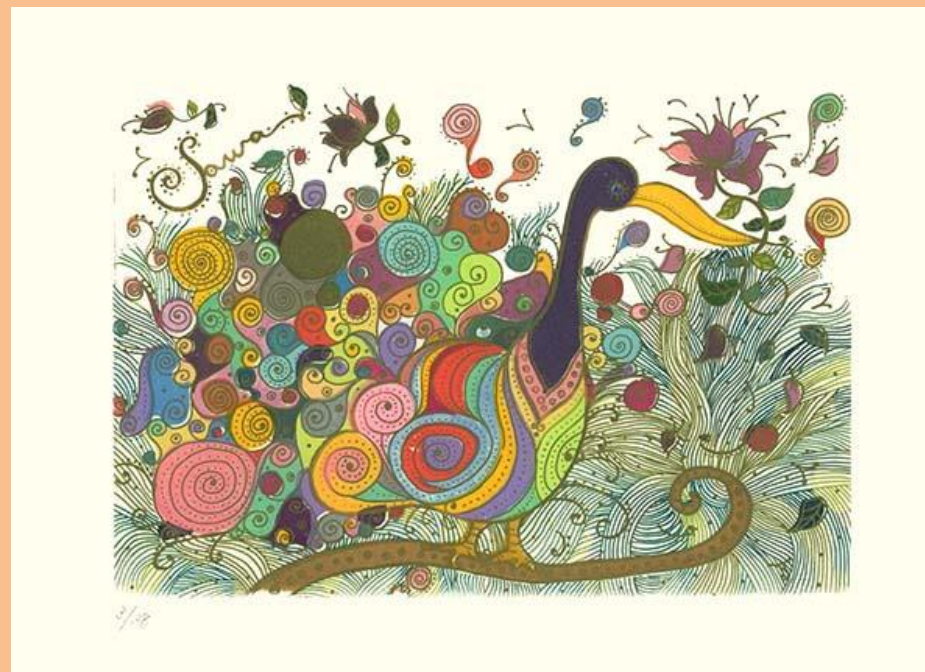
26 **Shima Yoshida** – toucan (*Ramphastos* sp.), semi-accurate, woodblock, entitled samurai toucan bird, 660 x 245 mm



27 **Yasuko Nakanishi** – unknown bird, inaccurate, intaglio, entitled energy, 235 x 190 mm



28 **Yoshiko Sawa** – peafowl (*Pavo* sp.), inaccurate, screenprint, 290 x 210 mm



29 **Eiko Kawakubo** – unknown bird, inaccurate, intaglio, entitled Mexico, 195 x 165 mm



15/50 Mexico
1977

Eiko Kawakubo
1977 17 栄子

30 **Shiratori Mizue** – unknown bird, inaccurate, intaglio, entitled juego, 180 x 100 mm



34/50 .1978

Juego



mizue Shiratori
白鳥瑞穂

31 **Shiho Murakami** – unknown birds, inaccurate, intaglio, 100 x 150 mm



32 **Asako Toyozumi** – Indian peafowl (*Pavo cristatus*), inaccurate, screenprint, entitled red bird, 185 x 190 mm



33 **Reika Iwami** – unknown bird, inaccurate, woodblock, entitled water fantasy – E, 510 x 345 mm



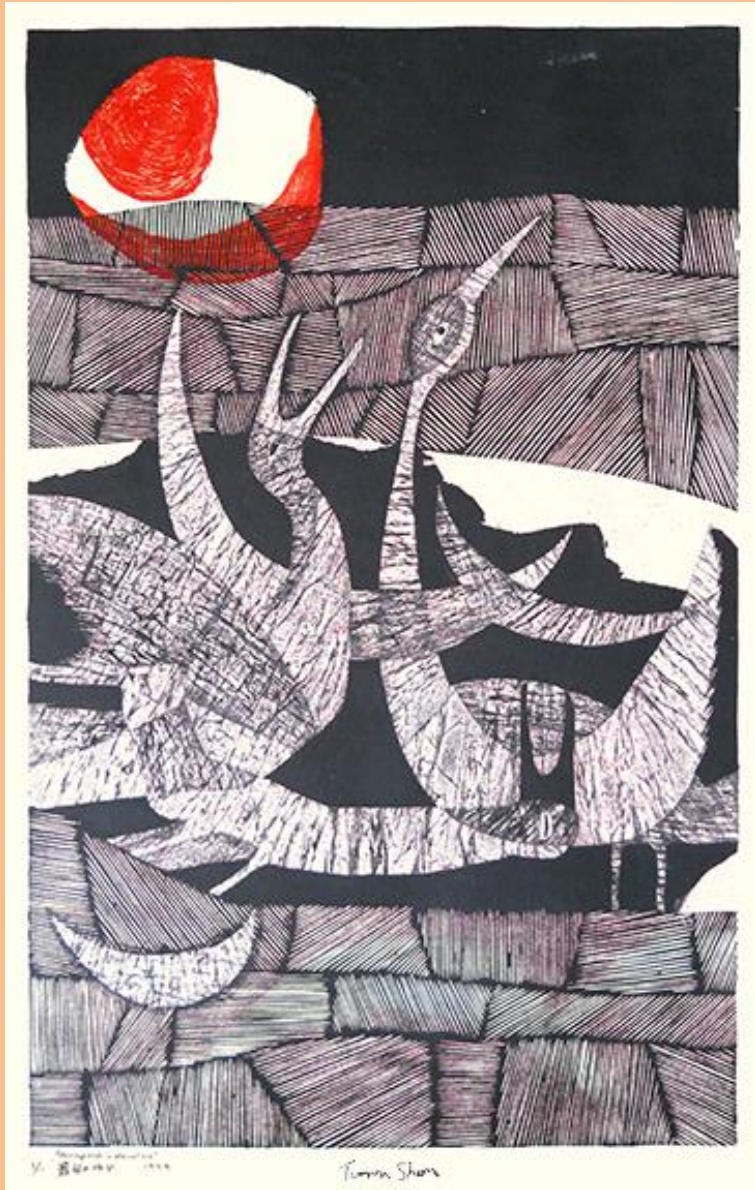
10/100 水号 幻 5. Reika Iwami '81

34 **Hideko Seki** – unknown bird, inaccurate, intaglio, entitled au jardin, 330 x 250 mm

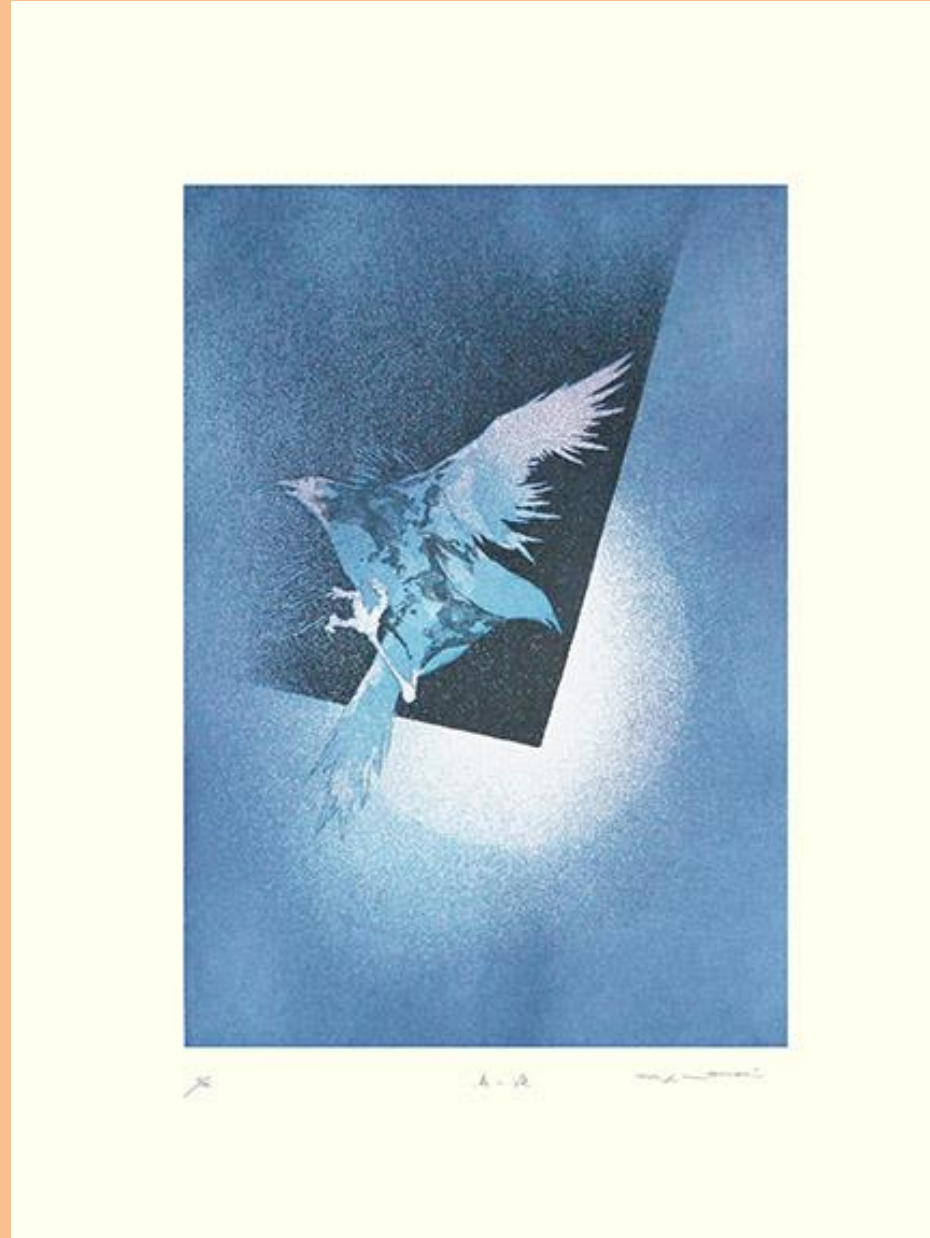


34/50 Au Jardin 330 x 250 mm Hideko Seki

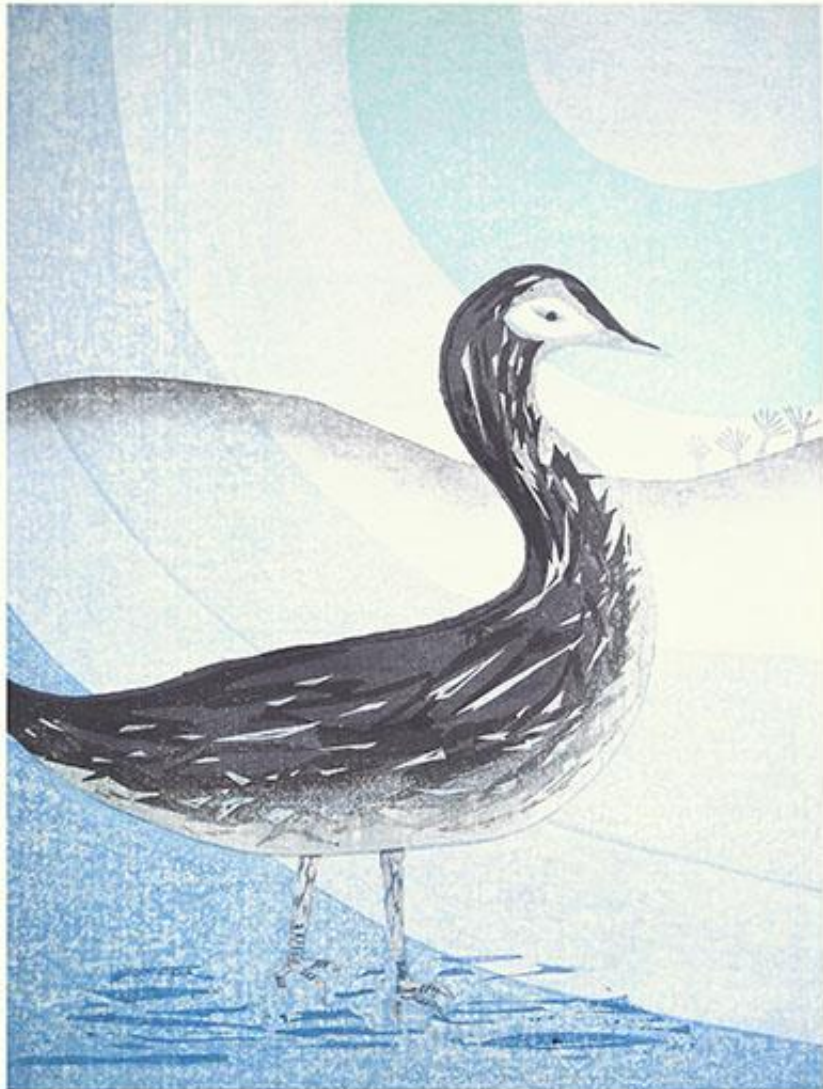
35 **Tamami Shima** – crane (*Grus* sp.), inaccurate, woodblock, entitled resting birds in eternal love, 530 x 840 mm



36 **Mio Omori** – unknown bird, inaccurate, intaglio, entitled night bird, 440 x 595 mm



37 **Yasuko Onishi** – unknown bird, inaccurate, woodblock, entitled winter's day, 460 x 590 mm



1/10

冬の日

Yasuko Onishi

38 **Naoko Tanikawa** – unknown bird, inaccurate, screenprint, entitled umbrella, 260 x 365 mm



39 **Keiko Minami** – unknown bird, inaccurate, intaglio, 370 x 450 mm



8/50

Keiko-Minami

40 **Fumiko Odajima** – unknown bird, inaccurate, woodblock, entitled melody II, 140 x 140 mm

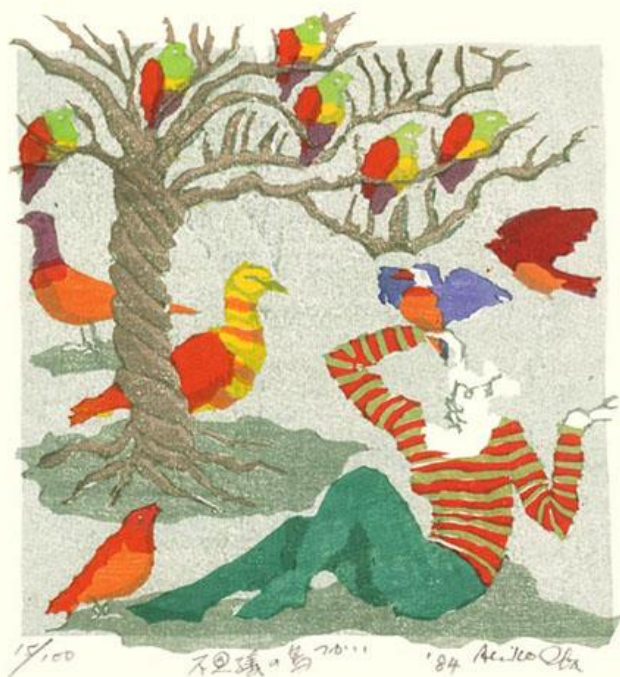


4/20

MELODY-II

Fumiko

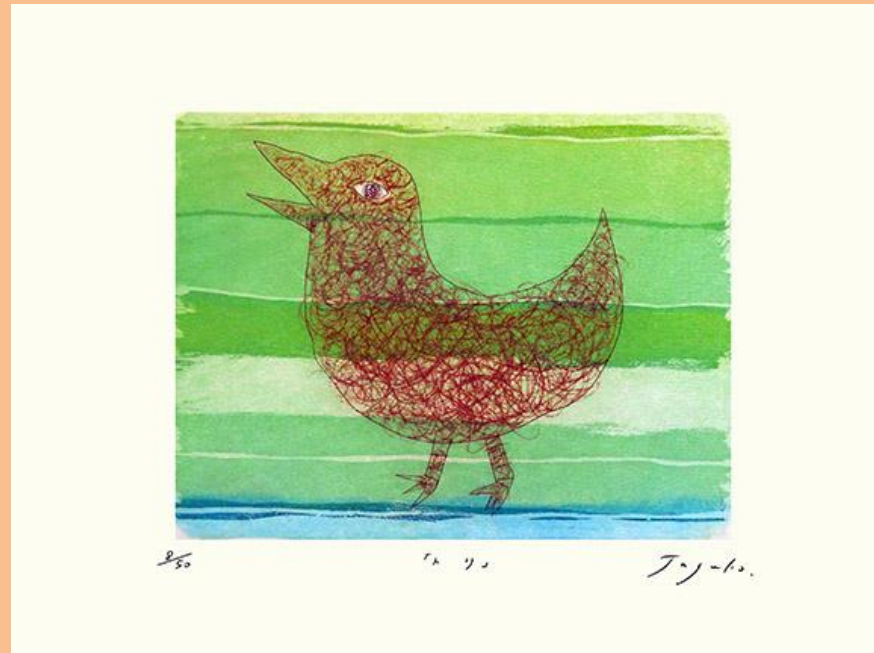
41 **Akiko Ohba** – unknown birds, inaccurate, woodblock, entitled strange bird trainer, 180 x 175 mm



42 **Kieko Tsurusawa** – Japanese bush-warbler (*Cettia diphone*), inaccurate, woodblock, 150 x 125 mm



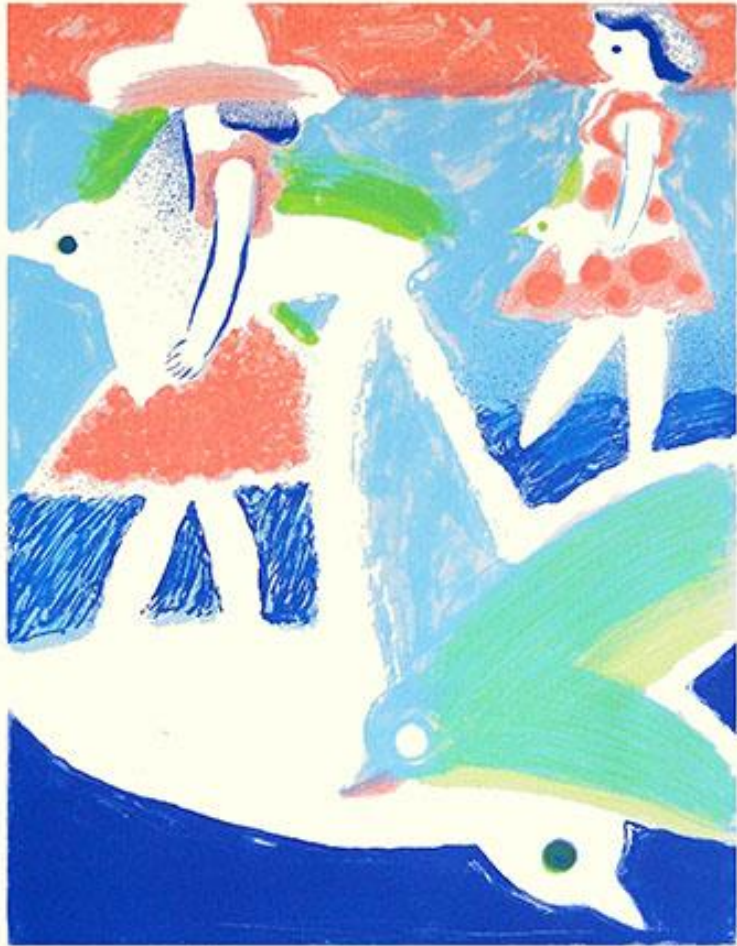
43 **Tazuko Nakamura** – unknown bird, inaccurate, intaglio, entitled bird, 355 x 265 mm



44 **Junko Ozaki** – unknown bird, inaccurate, lithograph, entitled night tree – d, 280 x 250 mm



45 **Asako Sasaki** – unknown bird, inaccurate, lithograph, entitled bird, 455 x 620 mm



7/50

30

Asako Sasaki

46 **Keiko Arakawa** – unknown bird, inaccurate, intaglio, entitled walking on the way to home, 305 x 485 mm



3/5

9.25 x 11.0

Keiko Arakawa

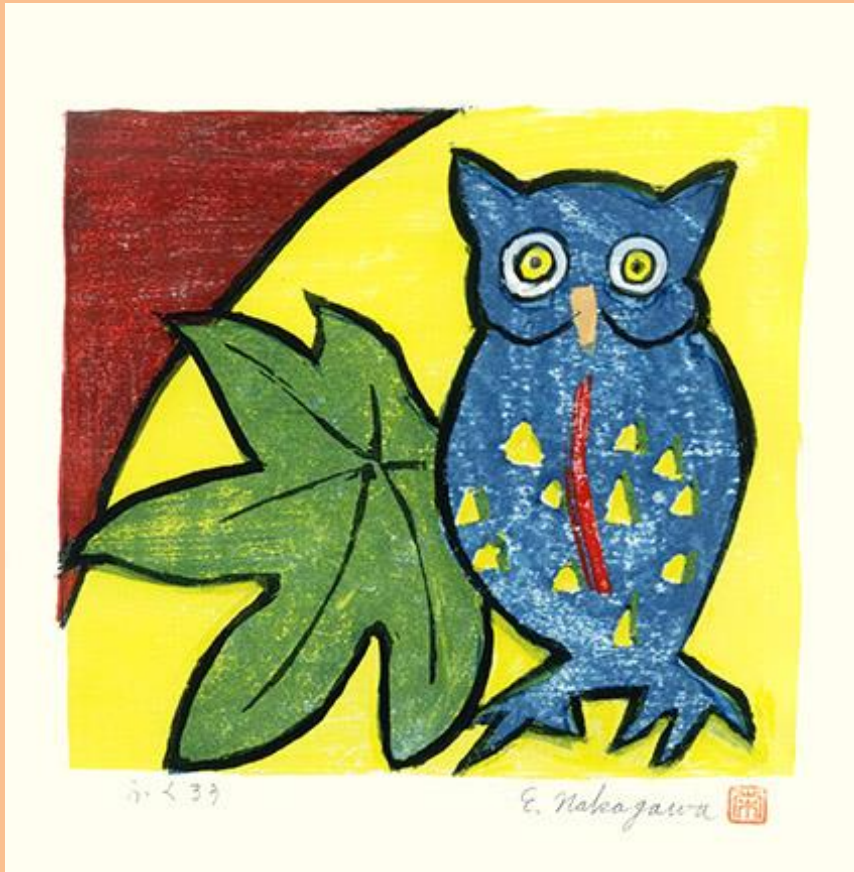
47 **Yūko Kanaeda** – unknown
birds, inaccurate, woodblock, 115 x
140



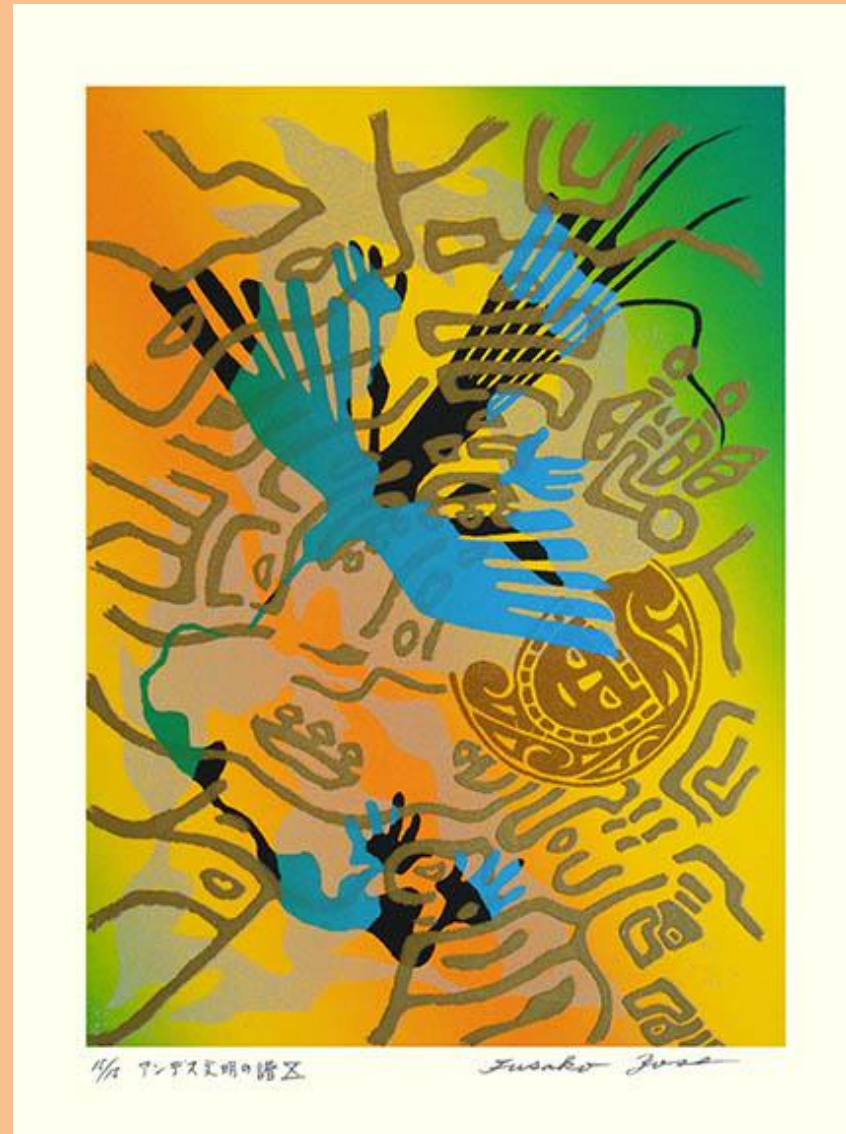
48 **Chieko Ishida** – unknown bird,
inaccurate, woodblock, 160 x 120
mm



49 **Eiko Nakagawa** – scops owl (*Otus* sp.), inaccurate, woodblock, entitled owl, 150 x 150 mm



50 **Fusako Yose** – unknown bird, inaccurate, screenprint, entitled music of Andean civilization 4, 280 x 380 mm



[Back to Exhibitions](#)